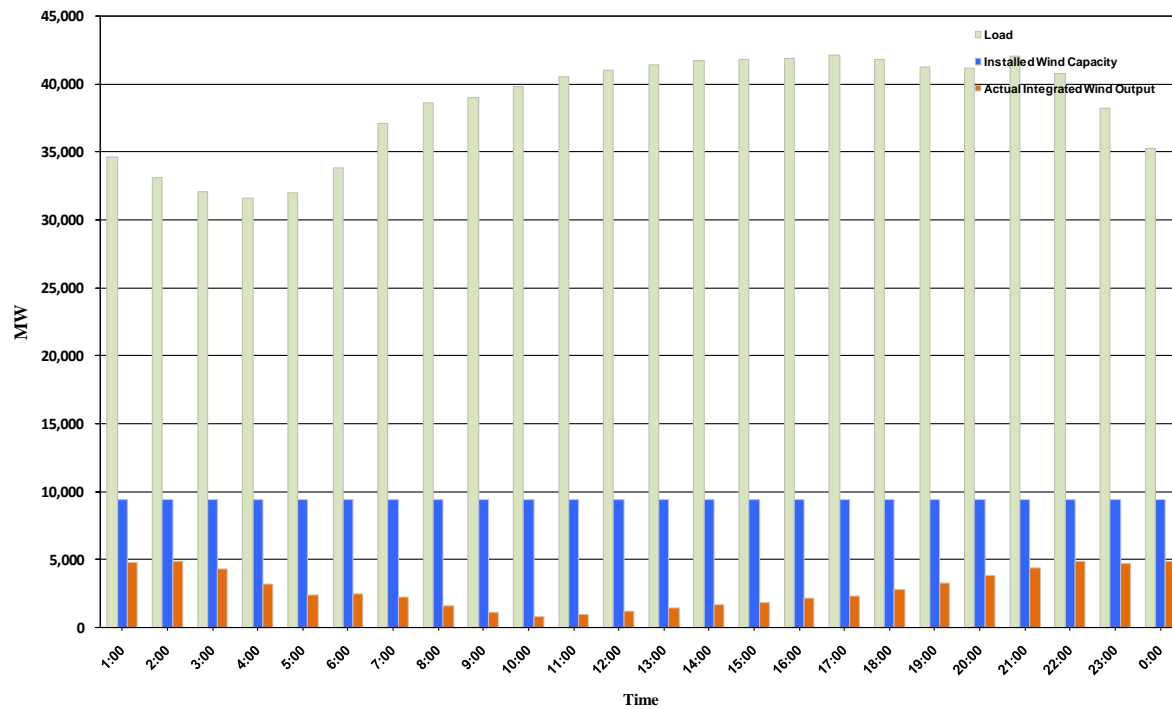




ERCOT Grid Operations Wind Penetration Report: 09/07/10

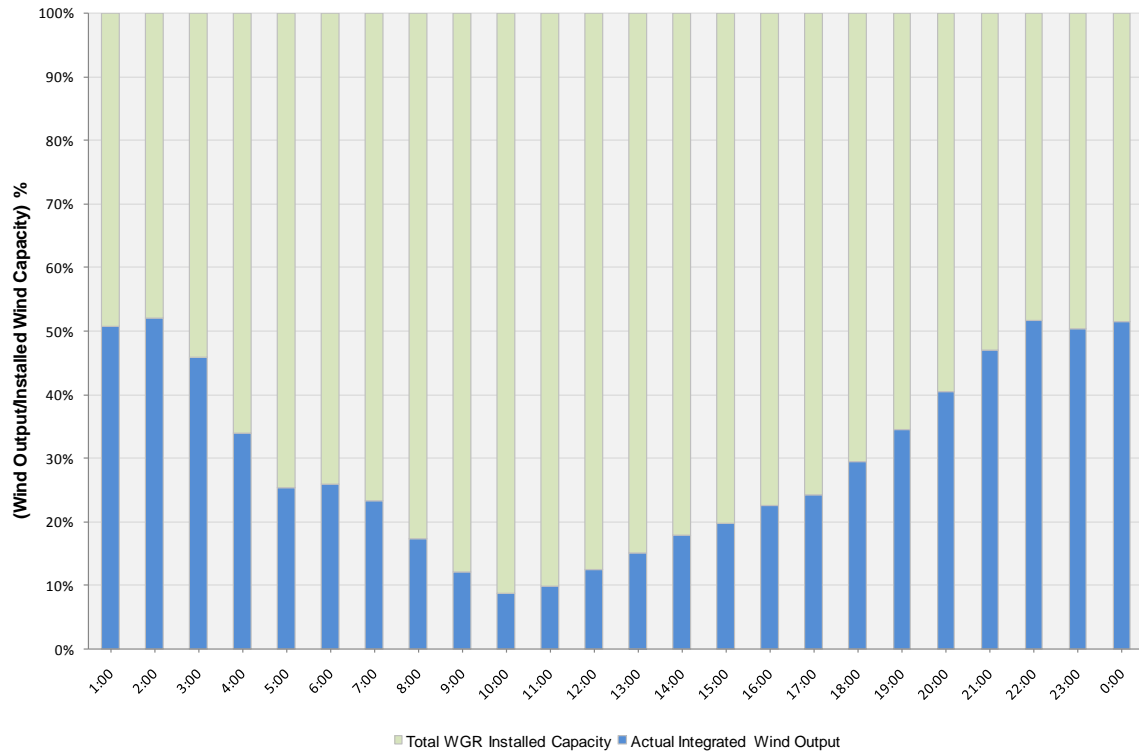
Peak Load	42,159 MW
Load Peak Hour	17
Wind Record 06/12/10	7016 MW
Max Wind value	5070 MW
Wind Peak Hour	01:08:40
Wind Penetration %	15.10

Hourly Average Actual Load vs. Actual Wind Output
09-07-2010

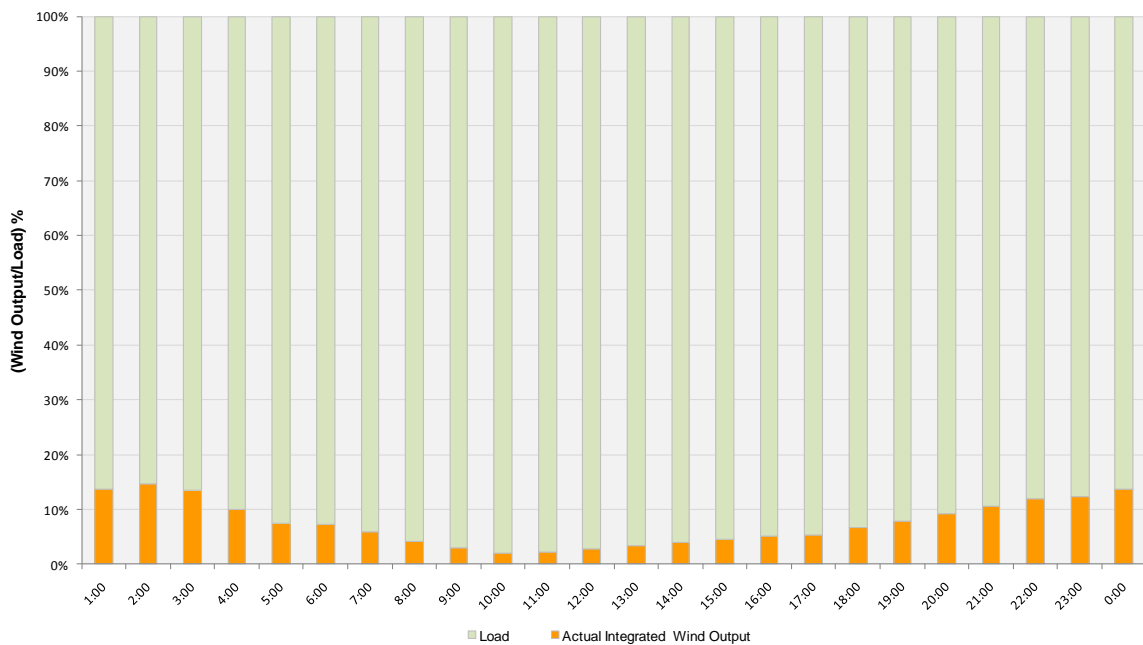




Actual Wind Output as a Percentage of the Total Installed Wind Capacity
09-07-2010



Actual Wind Output as a Percentage of the ERCOT Load
09-07-2010





ERCOT Load vs. Actual Wind Output 08/31/10 - 09/07/10

